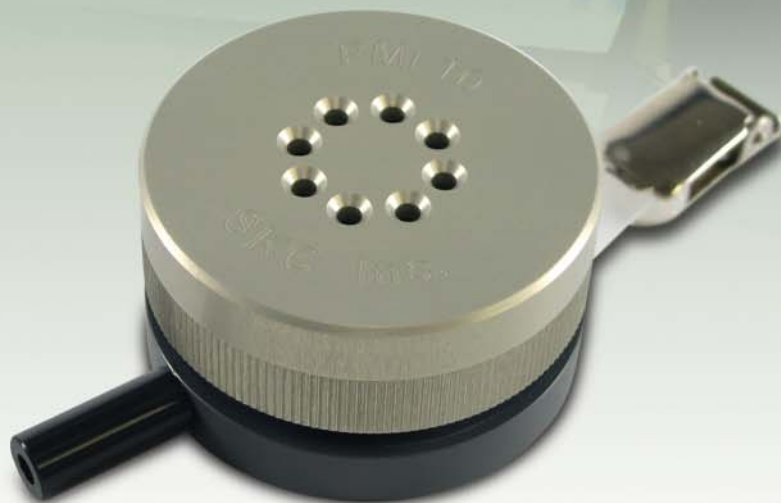


PMI

Personal Modular Impactors

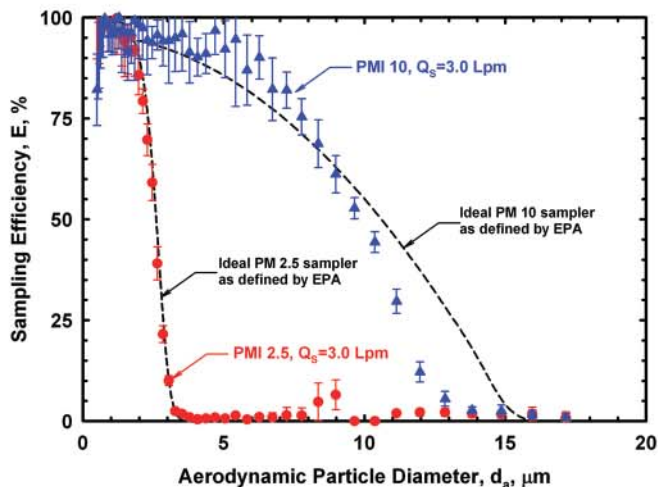
Highly Efficient Personal PM10, PM2.5, or PM Coarse Sampling

- Available for PM10, PM2.5, or PM Coarse_(PM10-2.5) sampling
- Use with any constant flow pump at 3 L/min
- Closely follows PM2.5 or PM10 as defined by EPA
- Compact and lightweight — only 2.5 ounces!
 - Ideal for personal sampling
- Convenient modular design for easy operation
 - Removable filter cassette for easy media changes
 - Disposable ready-to-use pre-oiled impaction discs reduce particle bounce for high collection efficiency — no cleaning or greasing
 - Convenient clip for mounting sampler in the breathing zone
- PMI 10 is easily converted to measure PM Coarse with accessory ring
- PMI 10 suitable for ACGIH® thoracic TLV®s
 - Including sulfuric acid as thoracic particulate matter



Description

The patented* SKC Personal Modular Impactors (PMIs) are designed for the highly efficient collection of PM10, PM2.5, or PM Coarse_(PM10-2.5). The samplers are easy to use with a removable filter cassette and pre-oiled impaction disc. PMI media changes are as easy as removing the filter cassette and replacing it with one already loaded with a 37-mm final filter. The 25-mm pre-oiled impaction disc mounts directly on top of the filter cassette and reduces particle bounce for high collection efficiency. A 25-mm filter may be used as an alternate impaction substrate for optional gravimetric or chemical analysis of particles. The PMI Coarse model and the Coarse Ring accessory include a second filter cassette to allow collection of particles sized between 2.5 μm and 10 μm .



Collection Efficiency of PMI 2.5 and PMI 10 Samplers

* U.S. Patent No. 7,334,453



Personal Modular Impactors (PMIs)

Highly Efficient Personal PM10, PM2.5, or PM Coarse Sampling

About PMI Coarse_(PM10-2.5)

When using the PMI Coarse (see Figure 2), air is drawn through a PM10 inlet. Particles > 10 µm collect on an oiled impaction disc mounted in the top of the first filter cassette. No filter is loaded inside this cassette. The air proceeds through a PM2.5 impactor (coarse ring). Particles sized between 10 µm and 2.5 µm (10-2.5 µm) collect on a 25-mm filter placed in the impaction substrate position in the top of the second filter cassette. Particles < 2.5 µm collect on the 37-mm final filter inside the second filter cassette. Filters are sent to a laboratory for gravimetric and chemical analyses.

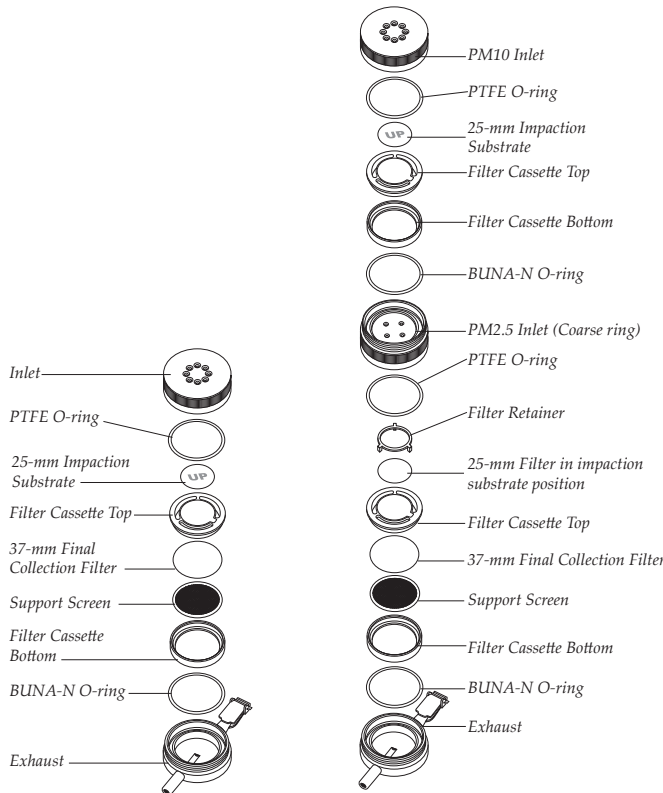


Figure 1. PMI 2.5 exploded

Figure 2. PMI Coarse exploded

Partner AirChek® XR5000 Pump with PMI

The PMI Samplers may be used with any constant flow sample pump capable of maintaining a constant 3 L/min flow rate. However, partnering a PMI Sampler with an AirChek XR5000 Sample Pump creates a highly efficient sampling system. The compact, lightweight XR5000 pump is ideal for personal sampling.



Performance Profile

- Flow Rate:** 3 L/min for all models
- 50% Cut-point:** 10 µm or 2.5 µm (model dependent)
- Material:**
 - Inlet:** Precision-tooled aluminum
 - Exhaust:** PVC
 - Filter Cassette:** Delrin® with stainless steel support screen
 - O-rings:** Inlet - PTFE
Exhaust - BUNA-N
- Final Collection Filter:** 37-mm filter, select based on application
- Impaction Substrate:** 25-mm pre-oiled, disposable porous plastic disc to reduce particle bounce or 25-mm filter for optional chemical analysis
- Analyses:** Gravimetric and chemical
- Dimensions (without clip):**
 - Diameter:** 2 in (5.1 cm)
 - Height:** 1 in (2.6 cm)
 - Weight:** 2.5 oz (70.9 gm)

Ordering Information

Description	Cat. No.
Personal Modular Impactor (PMI) includes impactor and filter cassette with support screen, <i>requires impaction substrate and collection media sold separately; see below</i>	
PM2.5	225-352
PM10	225-350
PM Coarse includes 2 filter cassettes and filter retainer	225-351
Recommended Collection Media	
Quartz Filters , 37 mm, Tissuquartz™, 432 µm thick, pk/25	225-1822
PTFE Filters †, 37 mm, 2.0-µm pore size, PTFE with PMP support ring, pk/50	225-1709†
PTFE Filters †, 37 mm, 1.0-µm pore size, PTFE with laminated PTFE support, pk/50	225-2705†
Impaction Substrate	
Impaction Discs ‡, 25-mm, pre-oiled porous plastic discs, ready to use, disposable, <i>required for sampling, limited shelf-life</i>	
	pk/25 225-355‡
	pk/50 225-355A‡
Accessories	
Coarse Ring includes filter cassette, adapts a PMI 10 to a PMI Coarse	225-3512
Replacement Filter Cassette	225-356
PMI Cassette Opener	225-357
Forceps , stainless steel, non-serrated flat tips	225-8371
Filter-Keepers , 37 mm, for filter transport	pk/100 225-8303
	pk/10 225-8303A
PMI Calibration Adapter	225-358
Filter Retainer , secures filter in impaction substrate position on top of cassette	225-354

† Back pressure on PTFE filters can vary within the same lot.

‡ A 25-mm filter may be used as an alternative impaction substrate for optional chemical analysis.

SKC Limited Warranty and Return Policy

SKC products are subject to the SKC Limited Warranty and Return Policy, which provides SKC's sole liability and the buyer's exclusive remedy. To view the complete SKC Limited Warranty and Return Policy, go to <http://www.skcinc.com/warranty.asp>.



Barcelona: C./Llobregat 14 - 08750, Molins de Rei, Barcelona - Tel. 932 233 333 - Fax. 932 232 220
 Madrid: C./Sofía 177J, Local C- 28022 Madrid - Tel. 913 240 014 - Fax. 913 134 753 - Bilbao: Tel. 944 471 999 - Vigo: Tel. 986 200 366

VERTEX Technics, S.L. - NIF: B60220191 - Inscr. R.M.B. et 3-2-93 - F.106 - T. 24982 - H.B-81920

www.vertex.es - vertex@vertex.es

ISO 9001:2008